

**Bluebell**  
ESTATES



Flat 32 Leander Heights, Mill Wood, Maidstone, ME14 2FS  
£1,250 PCM

## About this property.....

This unfurnished, one bedroom apartment is located on the 4th floor. The open plan living - dining - kitchen area leads onto the balcony but if you like being outside, this building has a superb roof top garden laid out over 3 levels with different seating areas and far reaching views, along with a further communal area outside the apartments to enjoy. It is available immediately.

The property also has an underground parking space so there's no need to defrost the car on those chilly winter mornings!

## Situation.....

Maidstone, the county town of Kent, has a vibrant mix of unique stores and popular high street brands. Foodies will also be spoilt for choice with a range of options from traditional afternoon tea to fine dining experiences. The town's buzzing nightlife is another highlight, with a variety of pubs, bars and entertainment venues to suit all tastes.

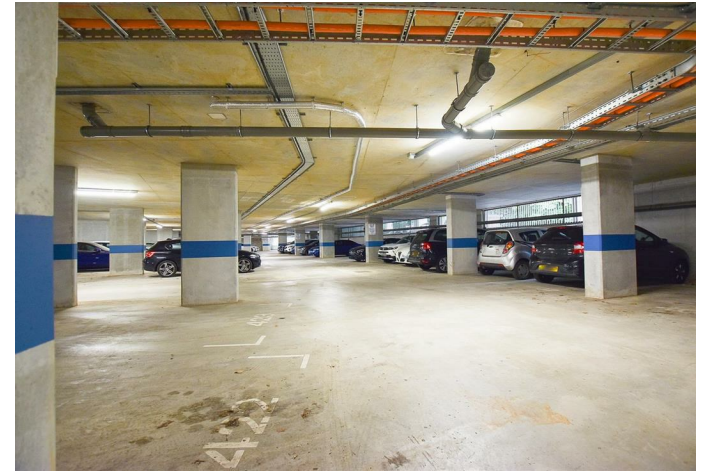
Outdoor enthusiasts will find plenty to keep them busy too, from cruising down the river on the Kentish Lady to exploring the many cycling and walking routes that showcase the region's charm and heritage. Families will love attractions such as Kent Life Heritage Farm and the 450-acre Mote Park, offering unforgettable experiences for all ages.

Commuting to London is a breeze with direct train links from Maidstone East and Maidstone West stations, with journey times as short as 51 minutes. The town also has excellent road connections, with easy access to the M20 motorway junctions 5 to 7 providing routes to London and the coast.









## What the owner says.....

SECURITY DEPOSIT = FIVE WEEKS' RENT

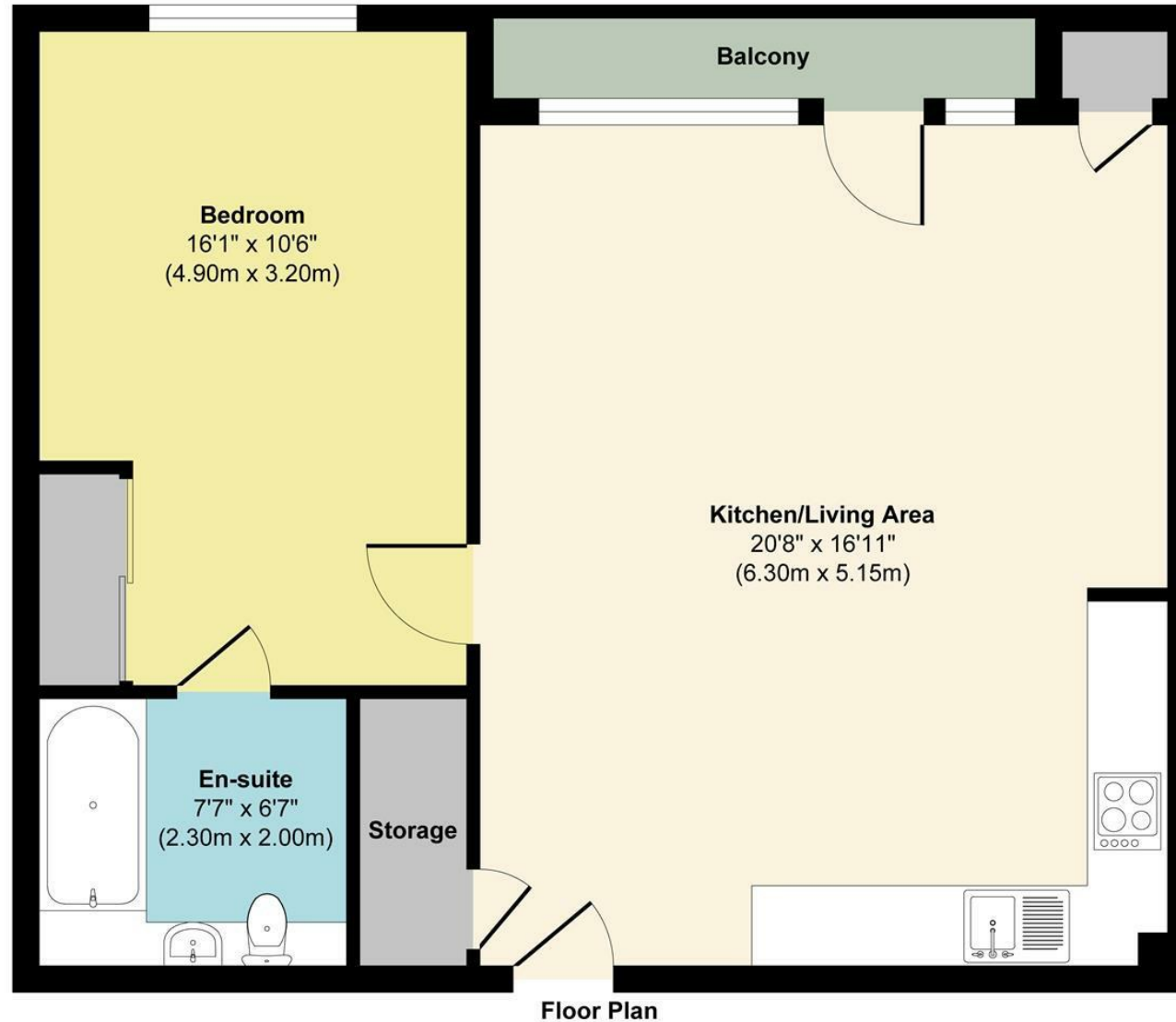
MINIMUM INCOME REQUIRED = £37,500

TENANTS WITH PETS = NOT ACCEPTABLE

TENANTS WHO SMOKE = NOT ACCEPTABLE

HOLDING DEPOSIT = ONE WEEKS' RENT

## Flat 32 Leander Heights, Mill Wood, Maidstone, ME14 2FS



**Approx. Gross Internal Floor Area 602 sq. ft / 56.02 sq. m**

Illustration for identification purposes only, measurements are approximate, not to scale.

Produced by Elements Property

### Agents Notes

Floor plans produced for illustrative purposes only. The position and sizes of doors, windows, rooms and other items are approximate and no responsibility is taken for any error, omission or mis-statement. These particulars are produced for information only and do not form part of any contract. The agent has not had sight of any title documents. Fixtures, fittings and services not tested.



[bluebell-estates.co.uk](http://bluebell-estates.co.uk)